



The Island News

ST HUBERTS ISLAND RESIDENTS' ASSOCIATION INC

'The Central Coast's Island in the Sun'

PO BOX 247, ET TALONG BEACH 2257

MARCH 2015

Website: sthubertsisland.nsw.au

Page 2	Presidents Message	Page 4	Probus Club	Page 6	Concrete Cancer in Bridge
Page 2	Solar Warning / Alert	Page 5	Midgies and Sandflies	Page 6	Neighbourhood Watch
Page 3	Indian Myna Bird Trap	Page 5	Reserve Play Equipment	Page 7	Residents Association
Page 4	Fisho's Corner	Page 5	Order of Australia Medal	Page 8	St Patricks Day Fundraiser

WANTED NEW COMMITTEE

**The Association is the
Voice of St Huberts Island**

The Island Committee needs you

**The Annual General Meeting
March 19 2015**

is your opportunity to

**Nominate for the committee,
All positions vacant.**

Annual General Meeting

All residents are invited to attend the meeting in The Cove Hall, Empire Bay Drive, Empire Bay on Thursday March 19 2015 at 7.30pm.

This is an open forum where all matters of interest to island residents can be discussed.

A small plate of food would be appreciated to contribute to the supper after the meeting.

If you require a lift to the meeting please call Ron 4343 1540.

NEWSLETTER EDITORIAL & ADVERTISING

Any information can be forwarded to Neville Smith (Editor) 86 Helmsman Blvde for inclusion in the Island Newsletter which is produced every 3 Months. Each issue has deadlines so make sure any information is submitted early. Email: neville@herculesindustries.com.au

DISCLAIMER Whilst the honorary editor and the association accepts in good faith advertisements in this newsletter and editorial comment is made, we cannot provide any form of guarantee for the goods or services provided

Presidents Message

Our **Annual General Meeting March 19** and I invite all residents and members to attend. St Huberts Island community needs representation on issues that arise from time to time. It is now the time for a new committee is to be elected; the community needs your support.

Congratulations must go to the committee for their productive efforts on behalf of the community over the past year. Many thanks to all committee members who gave a very valuable contribution to the committee deliberations and to the betterment of St Huberts Island.

Lex Clark has had to retire from the committee, during his time on the committee he has done an outstanding job in the distribution of association communications to the residents and we wish him good health. The new newsletter has been one initiative being trialled, feedback so far has been positive.

Lyn Morris also a new member to the committee for the year had given new ideas and thoughts to the deliberations of the committee and I thank her for her efforts.

Your committee needs to be a viable unit ready to act on issues as they arise. Over the years there have been many issues that would have resulted in a much different outcomes had the committee not been there to represent the St Huberts Island community.

Many of your committee members have been in the position for many years and can't go on for ever.

All positions on the committee will be vacant and I invite all interested members to come along and nominate for any position they would care to.

The island needs fresh ideas, fresh enthusiasm now is the time to put your hand up and serve the community that we all are part of.

Ron Spratt OAM
President
March 2015

Ausgrid

Ausgrid are now on the final stages of connecting and commissioning the new cables installed over the past couple of years.

If you have solar systems you need to check that the solar system remains active after Ausgrid have completed the works on your premises. This is a relatively simple procedure but it needs to be done to secure the continued benefit of your solar system

DISCOUNT

**TONER CARTRIDGES
INK-JET CARTRIDGES**

AN ISLAND RESIDENT

PRINTER SUPPLIES. USE US TO REPLACE THE TONER CARTRIDGE FOR YOUR LASER PRINTER OR INK-JET CARTRIDGE FOR YOUR BUBBLE JET PRINTER

CALL NEVILLE FOR COSTS 4341 7739 ALL GUARANTEED

Ray White™

REAL ESTATE

Simon Eyre Real Estate
7 Blackwall Road, WOY WOY, NSW 2257
email simon.eyre@raywhite.com
Ph 4344 1000 Fax 4344 1744 Mob 04 0044 1000

The Name You Know,
The Name You Can Trust

Jude's Island Beauty
Wake up with Make-up

Cosmetic Tattooing (Softap)
Permanent make up in soft natural colours gently tapped into the skin for women who want to look more beautiful.

Other services include:-
Waxings - Nails - Spray Tanning - Pedicures
Eye Lash Extensions - Ear Candling
Piercing - Ears - Nose - Navel
and much more.

AN ISLAND RESIDENT

Jude Kruger 4341 6220
0406 813 690
www.judesislandbeauty.com.au

Indian mynas

The Indian myna was first introduced to Australia in Victoria between 1863 and 1872 into Melbourne's market gardens to control insects and the bird is likely to have spread to New South Wales at around the same time. The bird was later introduced to Queensland as a predator of grasshoppers and cane beetles.

Currently, Indian myna populations in Australia are concentrated along the eastern coast around Sydney and its surrounding suburbs, with sparser populations in Victoria and a few isolated communities in Queensland. During 2009 several municipal councils in New South Wales began trials of catching myna birds in an effort to reduce numbers.

In Australia, the Indian myna is an invasive pest. They are now often the predominant bird in urban areas all along the East coast. In a 2008 popular vote, the bird was named "The Most Important Pest/Problem" in Australia, also earning the nickname "flying rats" due to their scavenging resembling that of rats.

Native to the Indian sub-continent

- Iran to Sri Lanka
- member of Starling family
- 12 cm tall
- distinctive chocolate and black: yellow face skin, beak and legs: white wing patch
- aggressive / territorial but roost communally
- opportunistic feeder - meat, food scraps, pet food, seed, berries, chicks
- long lived
- breeds Oct March



Not to be confused with Noisy Miner

- native Australian bird
- nectar feeder
- predominantly grey with black patch around eye and on top of head
- also aggressive to other honeyeaters and protective of food source



If you "don't like" Indian mynas about your place, or you want to do something about this invasive pest on the Island, the Association has an Indian myna trap available for loan. Statistics and Indian myna behaviour indicate that trapping can be successful in reducing their numbers

Contact the Association Treasurer, Ken on 4342 3156 to pick up the trap.

Lost Cockatiel

Found January 2 a Cockatiel if you have lost one please contact Joy 045263939.

Professionals

Ettalong Beach

YOUR FAVOURITE ISLAND TEAM!

ROB HUGHES

Quiet achievers with outstanding results !!

43 42 7900



FOREDECK MARINE PTY LTD
Shipwright/Boat Repairs

Mobile Boat Repairs

Experienced Qualified Shipwrights

Teak Deck specialist, Fibreglass & Timber work, Spray Painting, Gelcoat repairs, Fitout and custom modifications.

All MARINE WORK!

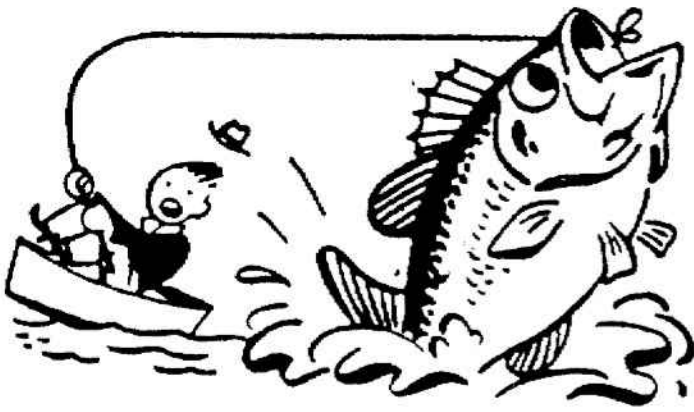
Contact: Andrew Ph: 0412 205 157

An Island Resident

**ALL
AUSTRALIAN
STONE
MASONRY**

PHONE
0402 716 109
ABN 53066545154

SEAWALL CONSTRUCTION & RESTORATION
ALL ASPECTS OF PAVING & POOL COPING RESTORATION
CLEANING & SEALING
LANDSCAPE DESIGN & CONSTRUCTION
FULLY LICENCED & INSURED
OVER 30 YEARS EXPERIENCE
20% DISCOUNT FOR ISLAND RESIDENTS
LICENCE No 193419C



FISHOS CORNER

Well, the Australia Day Long Weekend tourists have been and gone and have either taken all our fish or fed them!

Your fisho editor managed to get some fishing done just prior to the long weekend and bagged a nice flathead around the Rip Bridge area.

This issue the photos are of Ken with a 2.5kg flathead caught in the Rip Bridge area and Newsletter editor Nev

with a Longtom, also caught in the same area.

Come on, send your brag photos, Ken and Nev have started the ball rolling.



There are 'stories' of huge jewies being caught off half tide rocks (beach fishing) and the Rip Bridge area. Also reports of blue nose whiting in the 45cm range being taken at Umina Beach and Putty Beach. Lobster Beach also is reportably producing some good whiting and flatties.

Just a reminder the Ettalong Hotel Fishing Club and the Ettalong Beach War Memorial Fishing Club always welcome new members/families. For further information please contact Ken or the Editor via the St Huberts Island website or give me a buz (02 43 4231560- but not during call centre hours!

Tight lines everyone! Ken



Probus Club of Ettalong.

The Probus Club of Ettalong provides avenues for active senior members of the community to meet in circumstances which provide companionship and intellectual stimulus through social interaction and activities.

Recently 66 Probians and friends enjoyed a fun 4 day cruise on the Australia Day Long weekend.

Next meeting is at Harrys Restaurant, Ettalong Bowling Club 9-15am for 9-30am on 18th March 2015.

Please contact Ken Lummis (Ettalong Probus Secretary) ph 43 423156 if you would like to attend



FOLDING TABLES FOR HIRE

3 AVAILABLE
FOR ISLAND RESIDENTS ASSOCIATION
MEMBERS ONLY

ALL ENQUIRIES AND BOOKINGS
PHONE Ken Lummis 4342 3156

\$10.00

COASTLINE MAINTENANCE SERVICES

- * HOME REPAIRS
- * LANDSCAPING & MOWING
- * GARDENING
- * GARDEN MAINTENANCE

Greg Tweed
Mob 0425 250 911

Phone/Fax 4341 6766



**Island
Angel**

Home help for Island Residents only.
Retired professional mature aged lady
available for :-

- * Light Cleaning
- * Shopping
- * Cooking
- * Reading
- * Child Care

\$20.00 p/h



Telephone Jane 0473 090 244
Email jane970@bigpond.com

Biting Midges (Sandflies)

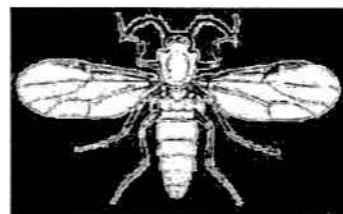
Biting midges are small robust insects with piercing and sucking mouthparts that belong to the family of flies Ceratopogonidae. Only a few groups within this family are known to suck blood and their distribution is almost world wide. These small flies are renowned for their nuisance biting associated with habitats such as coastal lagoons, estuaries, mangrove swamps and tidal flats. In Australia these flies are commonly known as sandflies but are correctly referred to as biting midges.

The biting activity of adult biting midges is mainly limited to the periods of dawn and dusk; they will remain inactive through very windy weather, finding shelter amongst vegetation. Biting midges will usually disperse only short distances from their breeding sites. Only female midges feed on blood, but both the females and males will feed on vegetable fluids and nectar. Adults midges are 1.5-4.0 mm long with stout short legs, and at rest fold their wings, which are often mottled, over the abdomen. Their mouthparts are short and projected down. Female midges may attack humans in large numbers, biting on any areas of exposed skin, and often on the face, scalp and hands. Some species will blood feed on a wide range of animal hosts. The egg batches contain between 30-100 eggs, and are laid on selected substrates such as mud, decaying leaf litter, damp soil or other vegetative materials, dependent on the species. The small eel-like larvae hatch in a few days; their larval habitat must contain a proportion of organic material with a high moisture content to provide optimum conditions for the larval stage to thrive and pupate. The whole life cycle takes 3-10 weeks, dependent on species and environmental conditions, particularly temperature.

Biting midges are responsible for acute discomfort, irritation and severe local reactions. Itching may commence immediately after the bite, but often not for some hours later, and most individuals are unaware of being bitten at the time. Biting midges have their greatest impact on people arriving to an area or tourists. Local residents seem to build up some immunity to the biting. In some sensitive people, midges can produce persistent reactions that blister and weep serum from the site of each bite and these reactions may last for several days to weeks. Biting midges are not known to transmit any disease-causing pathogens to humans in Australia.

Treatment and Control

There are no known efficient methods of controlling biting midges, but personal protection will help in reducing exposure to their bites. Avoid localities, especially at dawn and dusk, that are known to be frequented by biting midges; wear protective clothing (long sleeves/pants), and apply a repellent to exposed skin. These measures will assist in limiting exposure to these biting flies. Irritation associated with bites may be alleviated with anti-pruritic (anti-itching) preparations such as EURAX, but severe reactions may require medical treatment with antihistamines.



Attunga and Solstice Reserves play equipment.

Unfortunately the Association has been advised by the Manager Community Programs, NSW Premier & Cabinet that our application for Play Equipment at Attunga Reserve has been unsuccessful.

We have contacted Gosford Council for information on their present position when the matter of play equipment for Attunga Reserve is likely to proceed.

Solstice Reserve also continues to be a play equipment free area, and Council has no plans for a playground there.

The Association continues to communicate with Council on this matter to get some equipment to replace the removed equipment.

Longstanding Island Resident Honoured

Congratulations to M/s Pat de Carle of Nautilus Parade who was honoured in the Australia Day Honours list with an **Order of Australia Medal** for her services to the community through art programs in hospitals.

Pat de Carle founded Hospital Art Australia in 2000. The program provided free support and art materials to 150 hospitals and nursing homes, and is a most rewarding program to the many recipients of the program.

She was some years ago honoured on the front cover of the Central Coast White pages. The award of the OAM is a most deserving award and as island residents we offer her our heartiest congratulations.

R & C
ABN: 42 906 1466 84

Island Resident

Lawn & Property Maintenance
FULLY INSURED

ISLAND
SPECIAL
DEAL

Shovel Sand
back to retaining wall

Mowing
Rubbish Removal
Gutter Cleaning
Landscaping
Pruning & Hedge Trimming
Odd Jobs
Pressure Cleaning
Tree Removal
Stump Grinding

Regan & Craig
0422237167

FREE QUOTES

Dimension One Glass Fencing

- * Semi Frameless Glass
- * Frameless Glass
- * Glass Balustrades

**FREE
QUOTES**

Scott Blackett
0408 432 032
Office
4353 8216

Email: scott@dimension1glass.com.au



Louise Williams

L·A·W BUILDING DESIGN

T 4341 7371 M 0418 667 781
www.lawbuildingdesign.com.au
(Resident of St Huberts Island)

Providing a customised range of Building Design Services from the Home Renovator to the Builder or Developer.

*New Homes *Additions & Alterations
*Residential Units
*Childcare Facilities *Small Commercial
*Shop Fit-out's
*Project Administration *Colour & Materials Specification

*Award Winning Building Designer



Neighbourhood Watch

The following crimes have been reported on the Island:-
November-Long Arm Parade, Break & Enter.
December-Mainsail Ave., 1 Stolen Vehicle/Vessel.
January-Long Arm Parade, 1 Stolen Vehicle/Vessel.

REPORTING CRIMINAL INCIDENTS

The police computer does not separate vehicles & boats !
Further clarification may be available on request. Please
Report all Crimes with the phone numbers below:



For crimes in progress, ring 000. Report other crimes to Police Assistance Line 131 444 or
Crime Stoppers 1800 333 000 if you wish to remain anonymous. These calls are recorded and added to police
crime logical statistics.

Concrete Cancer St Huberts Island Bridge

The diligence of a resident of the island in early January in bringing to the attention of the president the situation where concrete cancer was observed in the island bridge support structure. The president emailed council on 9 January 2015 in respect to the matter and The Mayor in letter dated 29 January 2015 states:-

"Council is aware of the maintenance issues relating to the bridge and it has been planning remedial work for some time. Council engaged a Bridge Engineer to conduct a thorough bridge inspection, however the availability of under bridge inspection equipment has delayed the inspection. From this inspection a long term maintenance will be developed. Repair work on the lower spalling is scheduled to commence by 30 January 2015 and will be completed as a priority. Council assures all residents that the bridge is structurally sound and able to carry normal traffic and is committed to maintaining all assets to a serviceable level."

Thank you to Gosford City Council in recognising the urgency of the rectification works and proceeding with the necessary repairs within a month of the matter being raised with council, our resident councillor Jeff Strickson and the Mayor Lawrie McKinna.

It is most appreciated that residents take the maintenance of the island infrastructure seriously and raise issues with the committee so that action can be taken to rectify problems before they become major issues.

Repainting the Bridge...

The Association is in constant contact with Gosford City Council in respect to the aesthetic condition of the bridge railings. Their response has been that the railings are structurally sound and the problem is one of aesthetics only. We are mindful of the matter of the bridge railings and it is a constant question raised at association meetings.

The association will continue to pursue the bridge painting.

SUPPORT YOUR LOCAL BUSINESSES

**Not Affiliated
With Any Bank
or Institution**

Levis Private Financial
Tel. 4342 8512 or 0438 989 199
www.levisplanning.com
107 Blackwall Rd., Way Way Opp. Leagues Club

Financial Adviser Genuine, Caring & Ethical Advice

Business & Personal Advice, Investments,
Personal Insurance & Finance

Best Retirement Options
DIY Super
Centrelink Strategy
Wealth Creations
Equity Release for >60's
Aged Care Planning

Island Resident

LEVIS
FINANCIAL
Authorized Representative
Fedora Pty Ltd AFSL 423716

MICRODERMABRASION & SONOPHORESIS

Effective treatment for:-

- * Fine lines & wrinkles
- * Acne, blackheads and congestion
- * Pigmentation
- * Minor Scar revision
- * Rejuvenation of dull, tired skin
- * Open pores
- * And much more

Mention this newsletter
to receive 20% off
your ASAP product

Do not pay \$140-\$160+ elsewhere

At Judes Island Beauty only pay \$100 per
treatment or pay for a course and get the
6th one free!

Love THE SKIN you're in

Also stocking Australia's leading Cosmeceutical
Skincare Products ASAP

4341 6220 or 0406 813 690

by appointment only

19 Discovery Street, St Huberts Island

Closed on
Sunday & Monday

SPECIAL ISLAND APRONS & CAPS:

Just released and available now, the "St Huberts Island"
BBQ Apron, a very attractive Apron with a bargain price
of \$18.00, Caps \$12.00. Order through our Secretary
Alick Phone 4342 0259.



What can you get for only \$5*?

- A straw gardener's hat
- Pack of 4 ice bricks
- One packet of 50mm flathead nails (180 of them)
- "Work it out" yoga blocks (??)
- 3.6 metres of stranded picture hanging wire
- 280 g of Maltesers
- A 230mm wide roller paint tray
- One tub of Gumption
- A dog plush toy
- A hose nozzle
- Travel slippers - almost throw-a-way
- One serving of take-away honey chicken - after 4 pm



\$5 can also achieve -

- Removal of illegally parked vehicles and trailers from our streets
- A sausage sizzle (with onions!) at the Long Arm Parade reserve for our "naming day"
- Picnic tables and benches at the bottom of the bridge, and Solstice, Long Arm, "Sewage Pump", Beachfront and Attunga reserves
- The Entry Statement (about \$65,000s worth)
- Major beneficial changes to Ausgrid's new cabling
- Avoided prosecution of several residents regarding their seawalls
- Irish beverages and a sausage sizzle to toast St Patrick, and bring the community together
- Bicentennial grant for a Rotunda in Long Arm reserve - subsequently pulled by Council
- Raw sewage flowing into the adjoining water from the Sewage pump station
- Kerb and guttering in Discovery
- One successful bus shelter
- Boating allowed in canals
- Public meetings for Island issues
- ... and too many more to list... but more importantly...
- **Membership of the Island Association**

The Association has done and will continue to do many things for **ALL** the Island's residents - Some of our successes are obvious and some not so, some not so successful, but we still **ALL** benefit. Membership renewal is approaching in June, and it's great value. If you are not a member of the Association, give membership some serious consideration. There will be a Membership Application and information in the June newsletter, so join up. It's only \$5 after all, and your Island Association will continue to improve our Island, represent your interests with local government, and listen to you. Support your Island, your Association, and all its residents.

In June you can get great value for your \$5.

An Island
Resident



Charlton Plumbing

Licenced Plumber,
Drainer & Gasfitter
New work, Renovations
& Maintenance
&
Specialising in
Pools & Spas

Call Glen for your free quote

0407 252 600



Why not try our Award Winning
Gourmet Sausages
Test them on your Barbeque
this Easter

ORDER
NOW

Peninsula Plaza WOY WOY, Phone 4342 2372 (opposite Woolworths)
also at CHITTAWAY BAY shopping centre 4388 1880

Heirloom

on Victoria

www.heirloomonvictoria.com.au

An Island Resident

Gift, baby, homewares, more

Shop 3 - 103 Victoria Street, East Gosford, NSW 2250 Phone 02 4322 9733



St Patricks Day

Keep this day FREE and come along.

St Patricks Day will again held this year on Sunday 15th March under the Marquee at Neville and Marilyn Smith's front lawn at 86 Helmsman Boulevard, again we are raising funds for the Westpac Helicopter Rescue Service. All funds raised on the day go to them.

Entertainment on the day will be "Keri Lewis", everyone in attendance last year were totally thrilled with her performance, She was brilliant and is a local entertainer.

It will be a GREAT day with heaps of Raffle Prizes, plus this year we will be supplying free sausage sandwiches again, we will have some soft drinks for the Kids.

The cost for the day is \$10.00 Donation per person and if you would like a Tax Rcpt the donation is \$20.00, this can then be claimed back with your Tax Return.

These costs entitle you to all drinks on the day, plus Sausage Sandwiches, The BBQ is there if you want to bring and cook your own meat. We will have Slushie Machine (Alcoholic, 2 Flavours), Homebrew Keg Guinness Irish Stout, Irish Whiskey and many other drinks will be available.

If you cannot attend and would like to make a Donation you can put your donation in envelope addressed to St Patricks Day with your name and drop it into the letter box at 86 Helmsman Boulevard.

All Proceeds collected on the day go to the Westpac Helicopter Rescue Service Service.

Can You Help ?

No one has ever paid to be transported by the Westpac Helicopter Service.

Westpac Rescue Helicopter Service



St Patricks Day Fundraiser will be held on Sunday March 15th, 2015

WARNING

SLOW
DOWN

THE SPEED LIMIT ON THE ISLAND IS

50

Raine & Horne 4341 7111
St Huberts Island

Tom Tregent | Andrew Tregent | Chris Ireland

www.sthubertsisland.com.au

KINCUMBER POOLS

* Service & maintenance
for all your pool needs
Mobile Service Technicians

OPEN
7 DAYS

AN ISLAND RESIDENT

Shop 4/34 Avoca Drive, Kincumber NSW 2251
Email: info@kincumberpoolsplus.com.au

MAREE DOBSON
Phone: 4369 0090 Fax: 4369 0075

**Time and time again,
we put our customers first.**

That's why we're open 9am - 12 noon every Saturday.

Bendigo Bank understands that life is busy enough without having to rush to get to the bank.

That's why we're open a total of 9 hours longer per week than most other banks.

So do your banking when it suits you, and experience the Bendigo way for yourself, 9.00am - 5.00pm Monday to Friday and 9.00am - 12noon on Saturday.

For more information call into 263-267 Oceanview Road, Ettalong Beach or Phone 4344 4206

Ettalong Beach Community Bank Branch Bendigo Bank

www.bendigobank.com.au Bendigo Bank Limited, Fountain Court, Bendigo, Vic. 3550. ABN 11 068 049 178. AFSL 237679. (bp27730-v1) (20/10/2006)